

AMBER BASIC

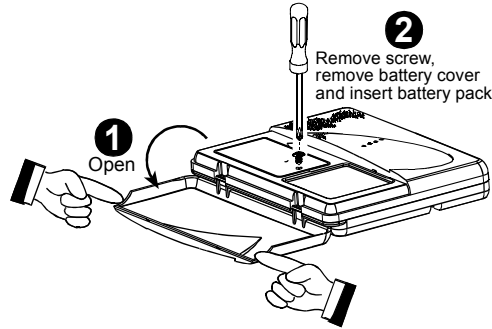
PERS - Personal Emergency Response System



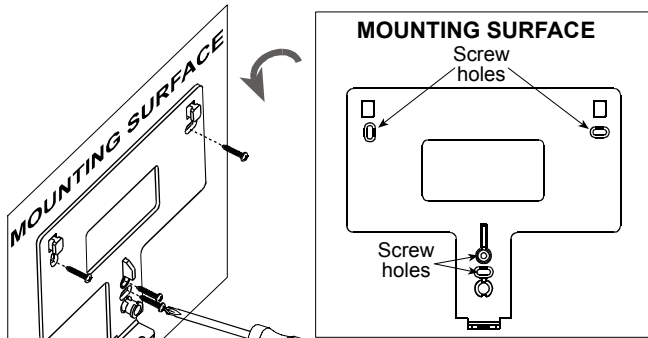
Visonic®

Installation guide

BACKUP BATTERY INSERTION



WALL MOUNTING



1

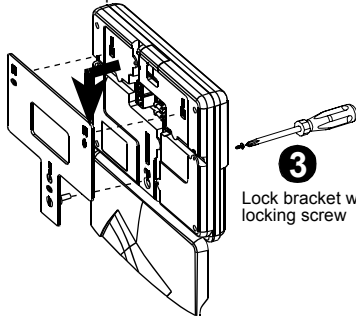
Mark and drill 4 holes in mounting surface. Insert wall anchors and fasten the bracket to the mounting surface with 4 screws.

NOTE

Verify that there is 3 cm (1.25 in.) at least free space around the bracket.

2

Locate the panel on bracket's projections and pull down

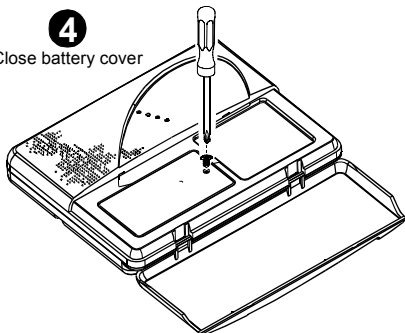


3

Lock bracket with locking screw

4

Close battery cover



DESKTOP MOUNTING

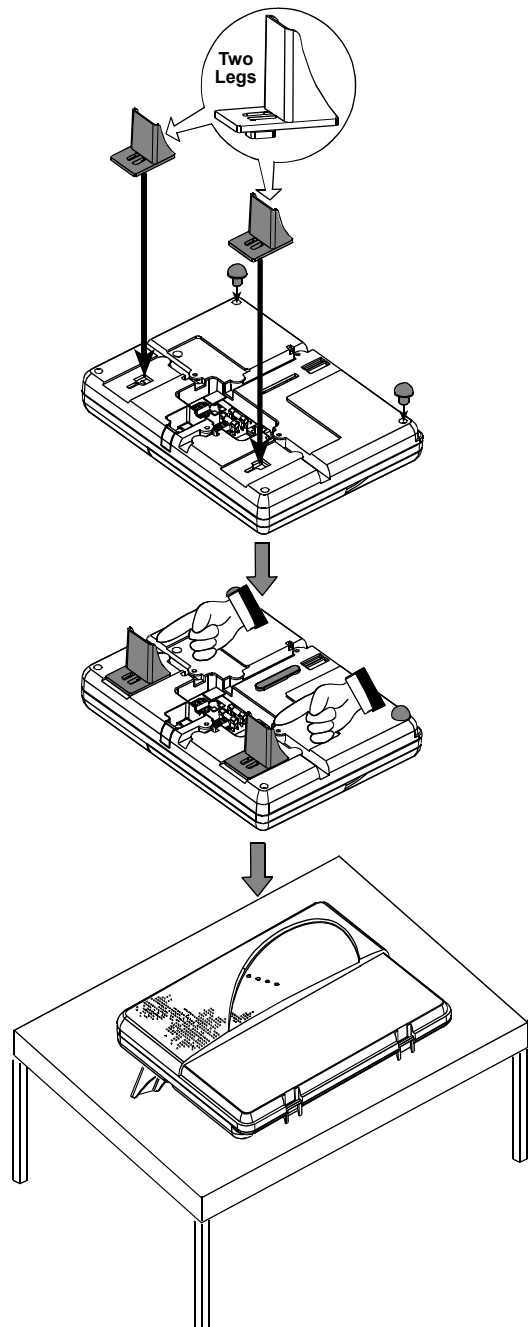


Figure 1 - Inserting Battery Pack and Mounting AMBER BASIC on a Wall / Desktop

Power and Telephone Connection

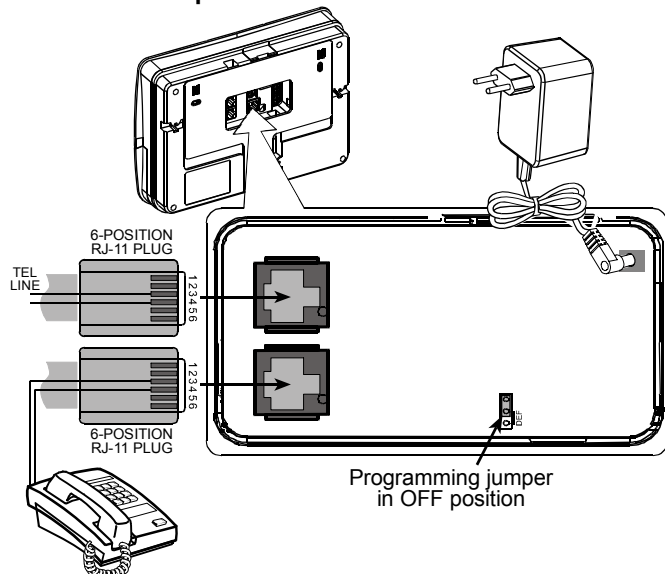


Figure 2 - Power and Telephone Connection

Transmitters Enrolling

By using a remote / local PC programmer, it is possible to enroll up to 28 transmitters in the AMBER BASIC.

Up to 15 wireless devices / transmitters can be enrolled Locally, without PC, in the Amber Basic, as follows:

1. Set the PROGRAMMING jumper to DEF position (see Fig. 2). All the LEDs should flash to indicate that the system is in programming mode.
2. Open the Battery compartment cover (see Figure 1 step 4).
3. Momentarily press the spring that is shown in Fig. 3, to select a desired system zone number in which the desired transmitter will be enrolled. Each press advances to the next zone number (1 - 15).

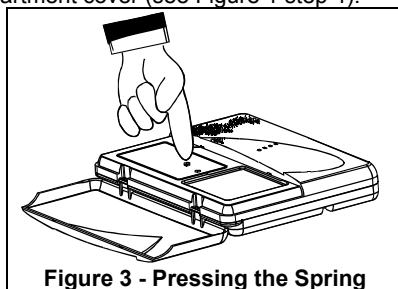


Figure 3 - Pressing the Spring

The LEDs **flashing** lights combination indicates the zone number, as shown in the following table:

Table 1 - Zone Number Indication

ZONE No.	LED			
1	ON	-	-	-
2	-	ON	-	-
3	ON	ON	-	-
4	-	-	ON	-
5	ON	-	ON	-
6	-	ON	ON	-
7	ON	ON	ON	-
8	-	-	-	ON
9	ON	-	-	ON
10	-	ON	-	ON
11	ON	ON	-	ON
12	-	-	ON	ON
13	ON	-	ON	ON
14	-	ON	ON	ON
15	ON	ON	ON	ON
16 (Global Zones clear)	-	-	-	-



VISONIC LTD (ISRAEL): P.O.B 22020 TEL-AVIV 61220 ISRAEL. PHONE: (972-3) 645-6789, FAX: (972-3) 645-6788
 VISONIC INC. (U.S.A.): 65 WEST DUDLEY TOWN ROAD, BLOOMFIELD CT. 06002-1376. PHONE: (860) 243-0833, (800) 223-0020 FAX: (860) 242-8094
 VISONIC LTD. (UK): 7 COPPERHOUSE COURT, CALDECOTTE, MILTON KEYNES. MK7 8NL. TEL: (0870) 7300800 FAX: (0870) 7300801
 INTERNET: www.visonic.com

©VISONIC LTD. 2008 AMBER BASIC Installation Guide D-301186 (REV. 0, 02/08)

4. Activate the desired transmitter. Two beeps should be heard and the proper LEDs combination (see table 1) should constantly light.
5. To verify that the specific transmitter was really enrolled, reactivate the transmitter and verify that all the LEDs should flash once (one after another, in a sequential manner) and then the proper LEDs combination will constantly light..
6. Perform steps 3 - 5 for all other desired transmitters.
7. Exit from programming mode by setting the programming jumper in OFF position (automatic exit is made if no action is performed during 4 minutes).
8. Close battery cover.

Deleting Wireless transmitters from the system memory

By using a remote or local PC programmer, it is possible to delete enrolling of wireless transmitters.

Locally (without PC), wireless transmitters can be deleted from the AMBER BASIC memory, as follows:

1. Set the PROGRAMMING jumper to DEF position. All the LEDs should flash to indicate that the system is in programming mode.
2. Open the Battery compartment cover (see Figure 1 step 4).
3. Successively press the spring (shown in Fig. 3) to select a desired system zone in which the desired transmitter will be deleted (see table 1).
4. To delete a transmitter, press the spring and hold it for 3 seconds approximately, the proper LEDs combination will be switched off then press it again 3 times successively. As a result, the proper LEDs combination (see table 1) will flash.
5. To delete all the transmitters from the AMBER BASIC memory, Successively press the spring (shown in Fig. 3) until all LEDs are flashing, press the spring and hold it at least 3 seconds, then press it again 3 times successively. As a result all the LEDs should switched OFF for 1 second and then will constantly flash.

Note:

When no transmitter is enrolled, all LEDs flash (☀ ☀ ☀ ☀).

Wireless Devices Test

1. Set the programming jumper to DEF position (see Fig. 3). All the 4 LEDs should flash.
2. Initiate transmission from a wireless device by pressing its transmit button. Verify that 2 beeps will be heard. This is an indication that the received signal level is good.



W.E.E.E. Product Recycling Declaration

For information regarding the recycling of this product you must contact the company from which you originally purchased it. If you are discarding this product and not returning it for repair then you must ensure that it is returned as identified by your supplier. This product is not to be thrown away with everyday waste.
 Directive 2002/96/EC Waste Electrical and Electronic Equipment.

